



# GAT MONTHLY MEMBERSHIP PROGRESS REPORT

Results as of: 4/30/2022

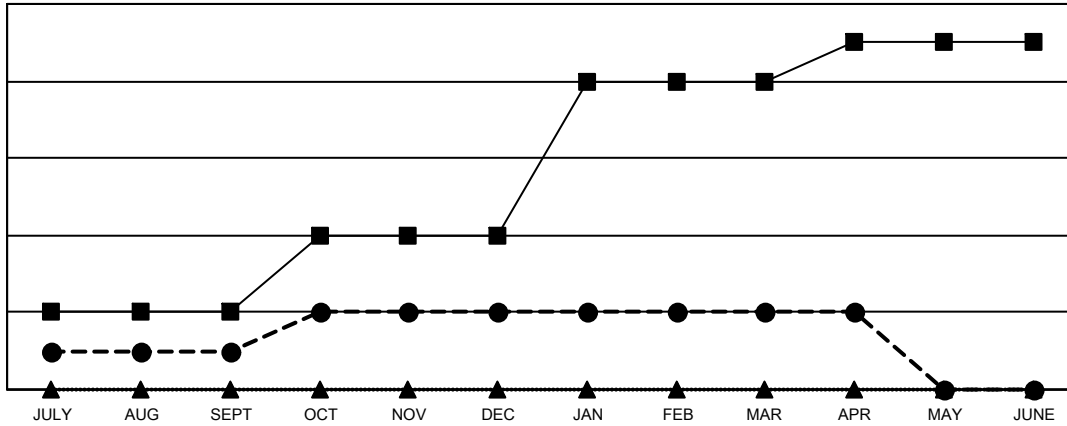
Multiple District 9

LOCATION: IOWA

Clubs			
RESULTS FOR 2021-2022			
QUARTER	NEW CLUB GOAL	NEW CLUBS	DROPPED CLUBS
JULY/AUG/SEPT	2	1	7
OCT/NOV/DEC	2	1	3
JAN/FEB/MAR	4	0	5
APR/MAY/JUNE	1	0	1

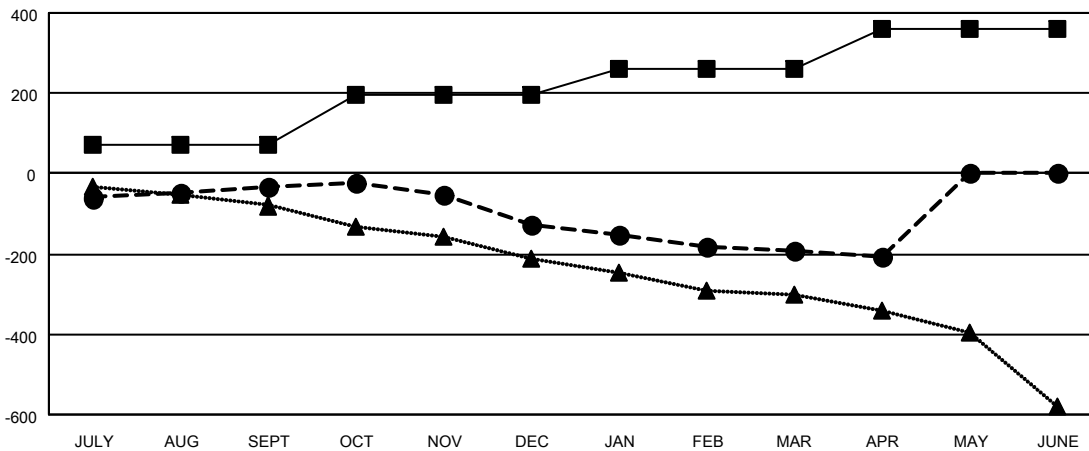
Members			
RESULTS FOR 2021-2022			
QUARTER	MEMBER GROWTH NET GOAL	MEMBER GROWTH ACTUAL	DROPPED MEMBERS ACTUAL (including transfers)
JULY/AUG/SEPT	70	185	205
OCT/NOV/DEC	125	161	227
JAN/FEB/MAR	65	114	169
APR/MAY/JUNE	100	45	62

GOALS AND ACTUAL NEW CLUBS CUMULATIVE



- CURRENT YEAR GOALS FOR NEW CLUBS
- CURRENT YEAR ACTUAL NEW CLUBS
- ▲- LAST YEAR ACTUAL NEW CLUBS

GOALS AND ACTUAL MEMBERS CUMULATIVE



- MEMBER GROWTH NET GOAL
- MEMBER GROWTH ACTUAL
- ▲- LAST YEAR MEMBERSHIP ACTUAL

DROPPED CLUBS: 16	162 CLUBS OF 303 ADDED 1 OR MORE NEW MEMBERS	<b>GENDER DISTRIBUTION</b>
<b>DROPPED MEMBERS</b>	<a href="#">CLICK HERE FOR CUMULATIVE MEMBERSHIP DATA</a>	MALE 5,015 (72.13%)
DECEASED 121		FEMALE 1,937 (27.86%)
CLUB CANCELLED 51		NON BINARY 1 (0.01%)
OTHER 491		PREFER NOT TO ANSWER 0 (0.00%)
<b>TOTAL 663</b>		TOTAL FAMILY UNIT MEMBERS 1,471
		FAMILY MEMBERS PAYING HALF DUES 748